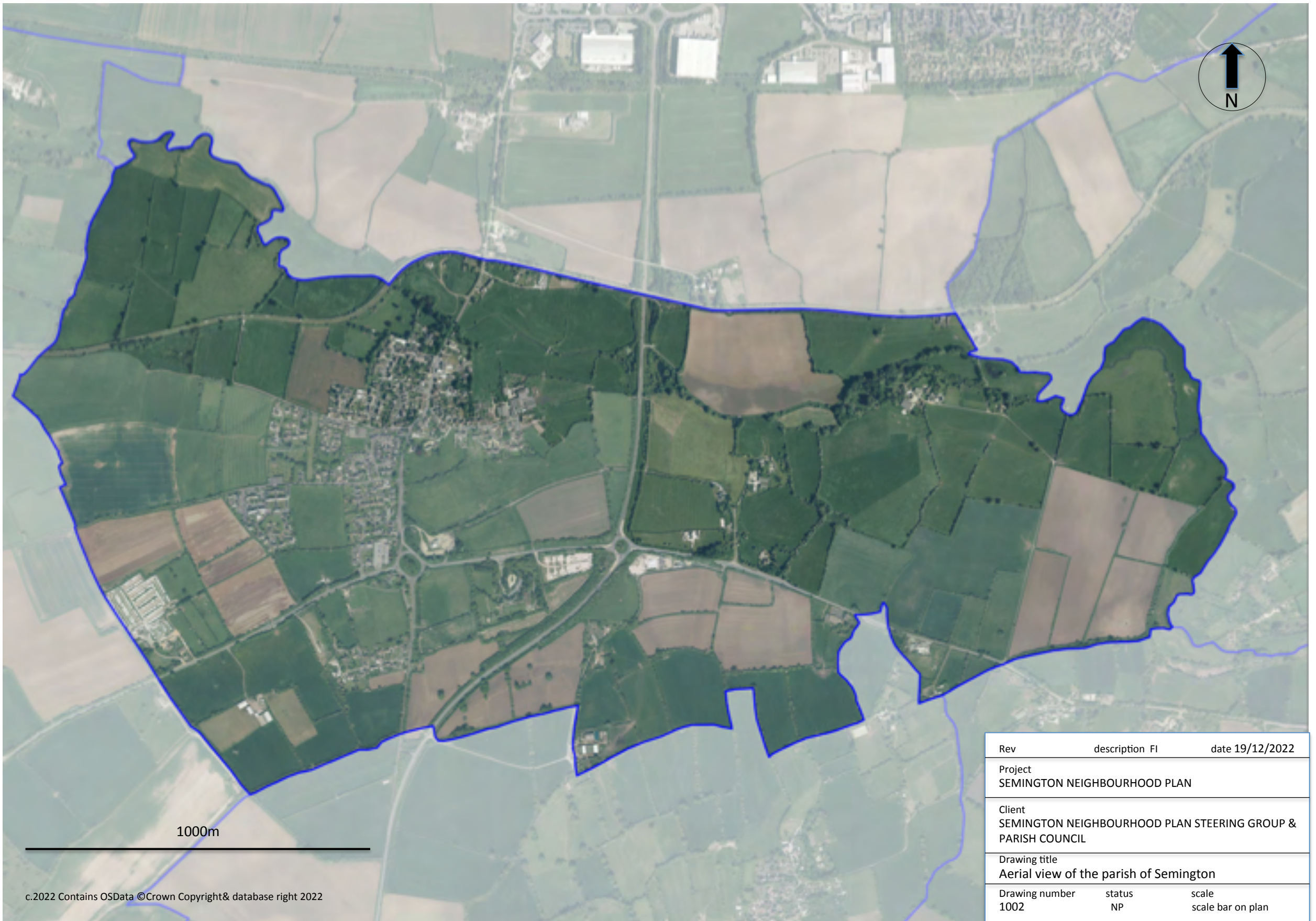


© 2022 Contains OSData © Crown Copyright & database right 2022

5km

Rev	description	FI	date
			19/12/2022
Project			
SEMINGTON NEIGHBOURHOOD PLAN			
Client			
SEMINGTON NEIGHBOURHOOD PLAN STEERING GROUP & PARISH COUNCIL			
Drawing title			
Location of the Parish of Semington			
Drawing number	status	scale	
1001	NP	scale bar on plan	

FIONA SHARMAN
LANDSCAPE PLANNING CONSULTANT

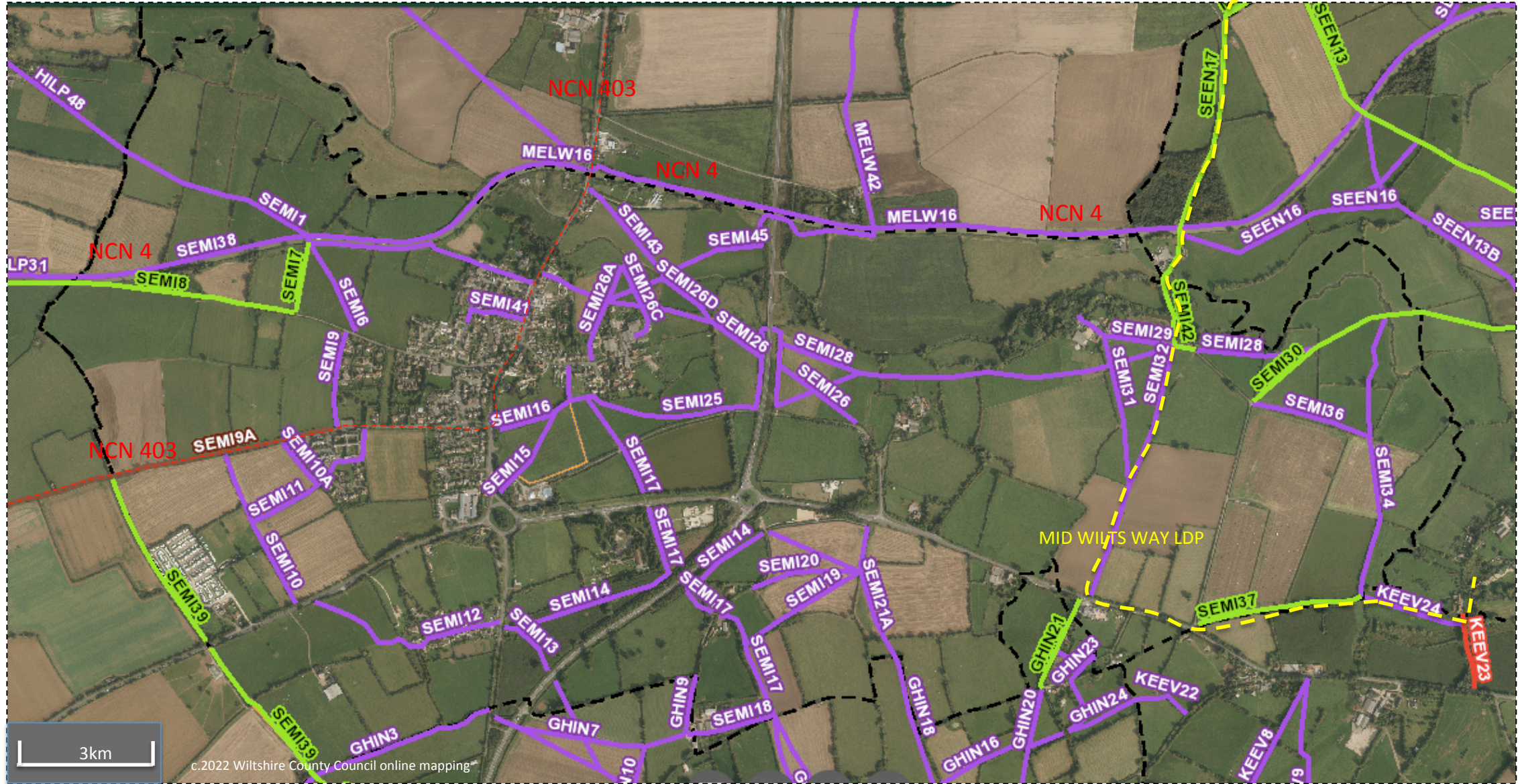
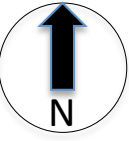




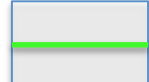
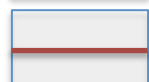
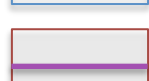
1000m

c.2022 Contains OSData ©Crown Copyright & database right 2022

Rev	description FI	date 19/12/2022
Project SEMINGTON NEIGHBOURHOOD PLAN		
Client SEMINGTON NEIGHBOURHOOD PLAN STEERING GROUP & PARISH COUNCIL		
Drawing title Aerial view of the parish of Semington		
Drawing number 1002	status NP	scale scale bar on plan

FIONA SHARMAN
LANDSCAPE PLANNING CONSULTANT



-  Long Distance Path
-  National Cycle Network (NCN)
-  Bridleways
-  Byways
-  Footpaths

Rev	description	FI	date
			19/12/2022

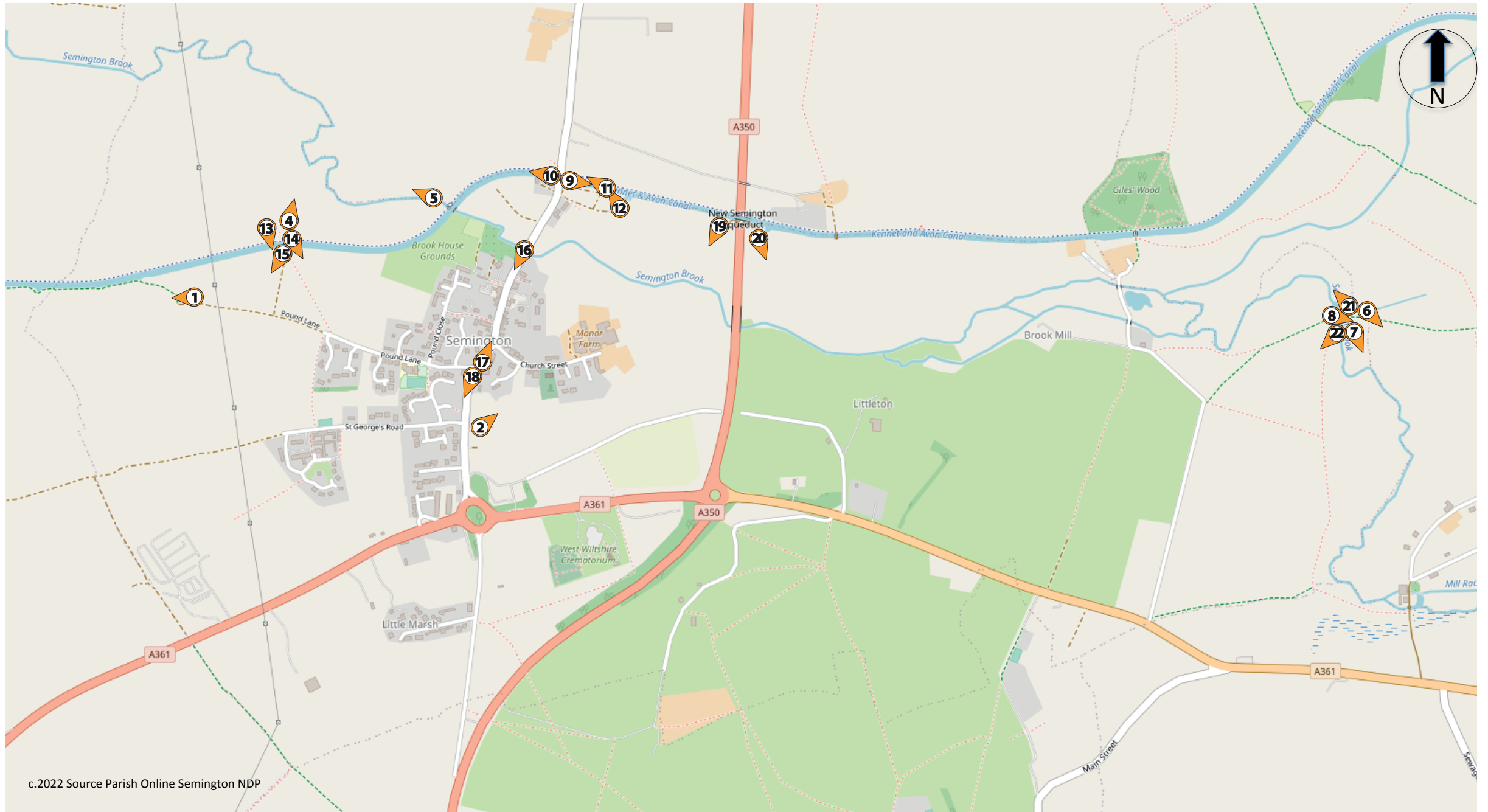
Project
SEMINGTON NEIGHBOURHOOD PLAN

Client
SEMINGTON NEIGHBOURHOOD PLAN STEERING GROUP & PARISH COUNCIL

Drawing title
Public Rights of Way (PRoW)

Drawing number	status	scale
1006	NP	scale bar on plan

FIONA SHARMAN
LANDSCAPE PLANNING CONSULTANT



c.2022 Source Parish Online Semington NDP

1000m

Rev	description	FI	date
			19/12/2022

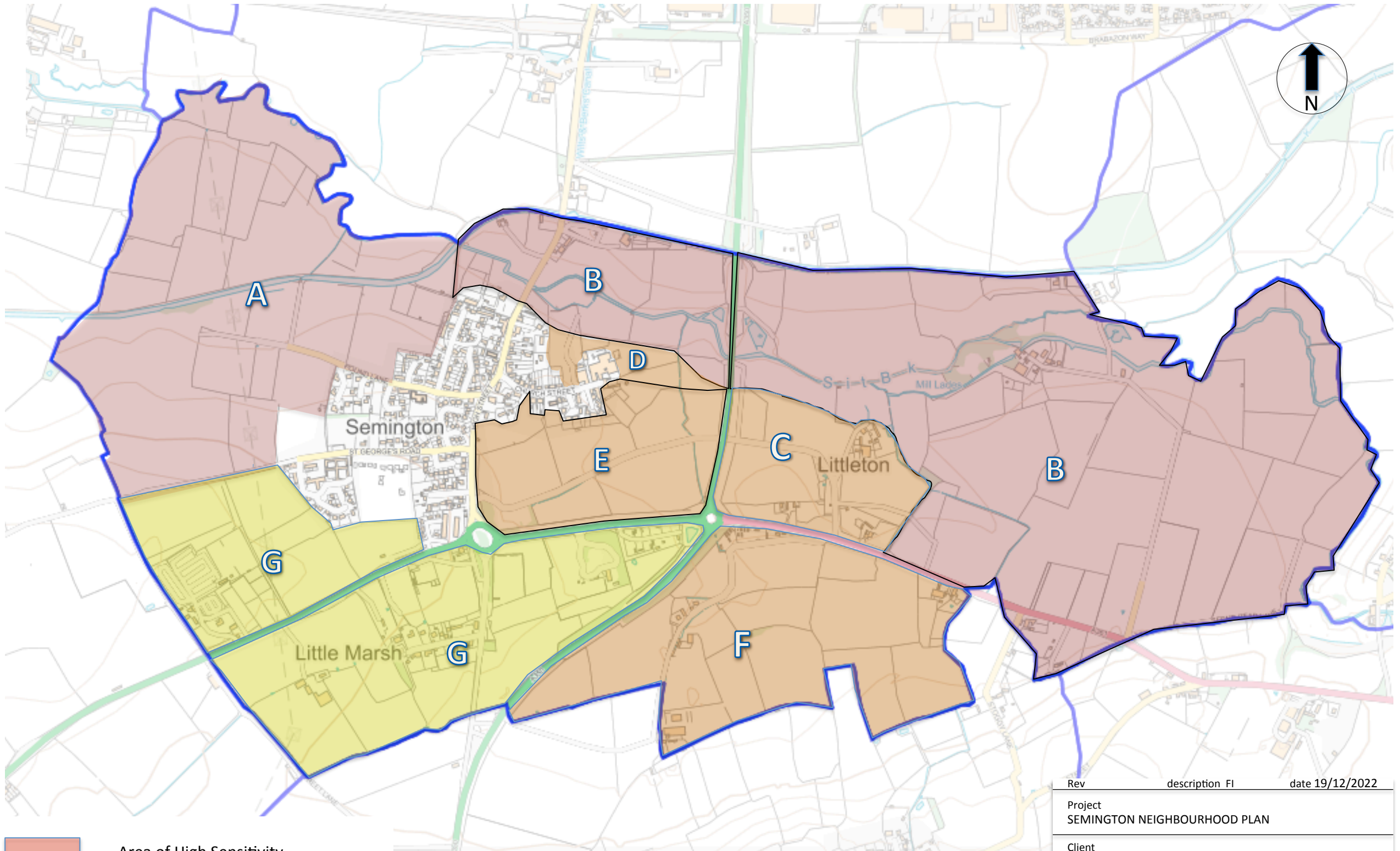
Project
SEMINGTON NEIGHBOURHOOD PLAN

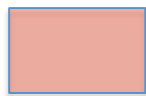
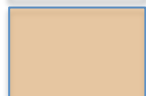
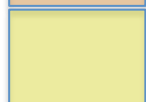
Client
SEMINGTON NEIGHBOURHOOD PLAN STEERING GROUP &
PARISH COUNCIL

Drawing title
Key Views

Drawing number	status	scale
1004	NP	scale bar on plan

FIONA SHARMAN
LANDSCAPE PLANNING CONSULTANT

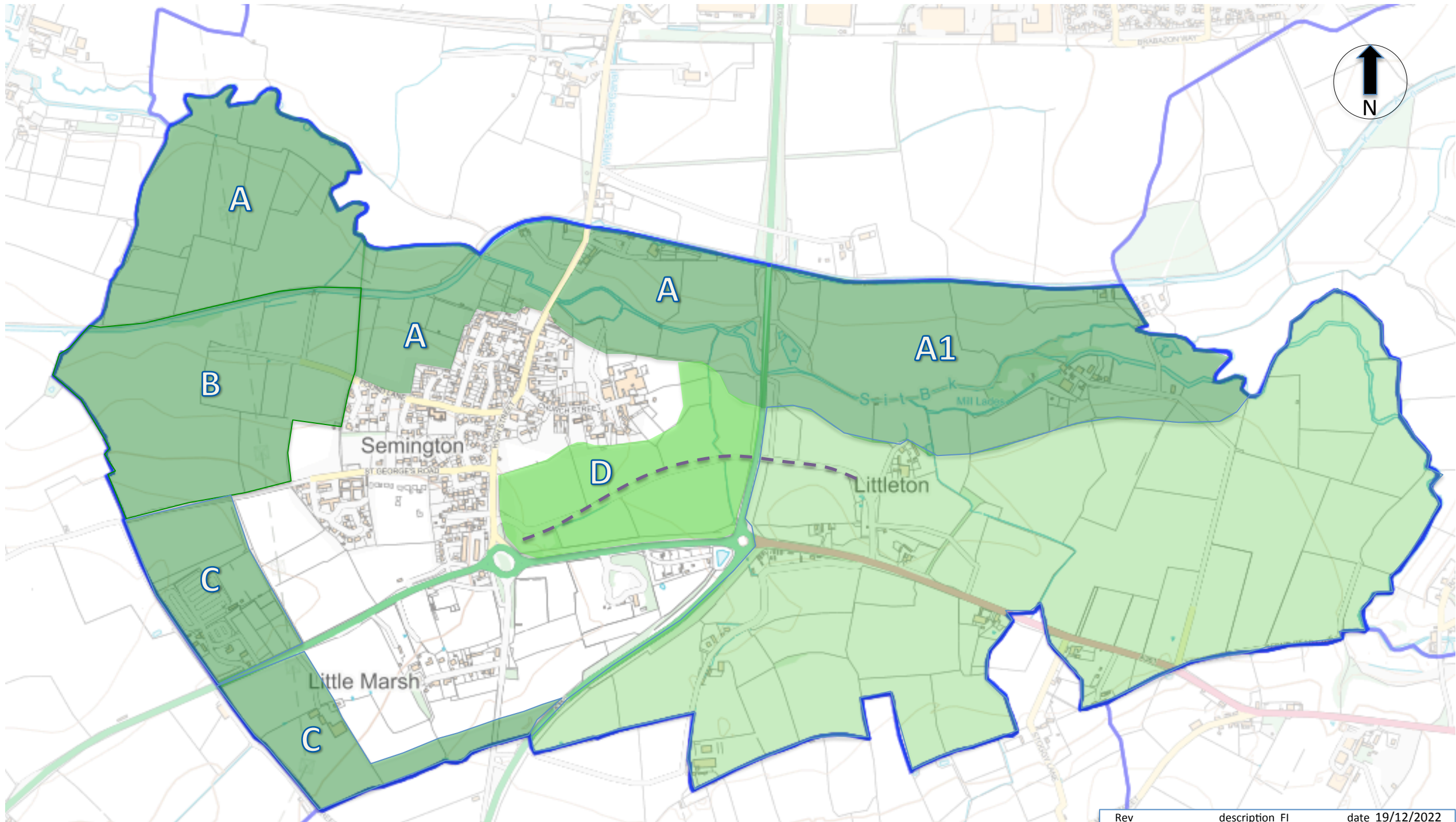


-  Area of High Sensitivity
-  Area of Medium to High Sensitivity
-  Area of Low to Medium Sensitivity

1000m

Rev	description	FI	date
			19/12/2022
Project SEMINGTON NEIGHBOURHOOD PLAN			
Client SEMINGTON NEIGHBOURHOOD PLAN STEERING GROUP & PARISH COUNCIL			
Drawing title Landscape Sensitivity			
Drawing number 005	status NP	scale scale bar on plan	

FIONA SHARMAN
LANDSCAPE PLANNING CONSULTANT



	Proposed Landscape Gap and interconnecting green space
	Existing open countryside/green area at settlement edge - to be protected.
	Existing open countryside/green space to be protected
	Potential to enhance/restore old route of A361 for amenity purposes.

1000m

Rev	description	FI	date	19/12/2022
Project SEMINGTON NEIGHBOURHOOD PLAN				
Client SEMINGTON NEIGHBOURHOOD PLAN STEERING GROUP & PARISH COUNCIL				
Drawing title Landscape Recommendations				
Drawing number	status	scale	scale bar on plan	
006	NP			

FIONA SHARMAN
LANDSCAPE PLANNING CONSULTANT